

# **Knox Presbyterian Church**

**5533 Dickinson Street  
Manotick, ON K4M 1A6  
613-692-4228**

Click here (<http://knoxmanotick.ca/>) for website.

## **Congregational Profile**

*Please direct inquiries to:*

Rev. John Fair, Interim Moderator  
99 Stoneway Dr., Nepean, ON, K2G 6P2  
Telephone: 613 823-9970  
Email: [johncraigfair@gmail.com](mailto:johncraigfair@gmail.com)

## **The Vacancy**

Knox Presbyterian Church is seeking a Minister of Word and Sacraments. The successful candidate will be the congregation's 13<sup>th</sup> minister since construction of this building in 1926.

Rev. John Fair has taken on the duties of Interim Moderator as appointed by the Presbytery of Ottawa.



## **Our Purpose -**

### **To worship and obey God by:**

- Introducing people to Jesus Christ
- Encouraging membership in the Church
- Equipping people for ministry
- Sending people into the community to share the good news of Jesus Christ

## **Our Vision**

- We will communicate to those around us the good news of God's free gift of salvation through Jesus Christ, and encourage individuals to experience the love of God and to grow in His love.
- We will provide a warm welcome for people to come together to worship God and to glorify His name.
- By our example, we will encourage others to incorporate their faith and love of God into everyday life.
- We will equip people to proclaim and share the good news of Jesus Christ by providing training in the beliefs of Christian faith.
- We will support the spiritual leadership of our church through prayer and participation.
- We will encourage responsible stewardship by the effective use of time, talents and money.
- We will encourage each other to study daily the Word of God - the foundation of our faith.
- We will provide instruction and opportunity for individuals to become communicant members of Knox Church.



## **Our Priorities - A congregational poll of the top 6 pastoral priorities:**

1. Leading Worship and Preaching (Planning and conducting worship services)
2. Equipping Church Members (Integrating Christian faith with life)
3. Crisis Visiting (Serving people at times of illness, death, trauma, family crisis, job loss)
4. Personal and Spiritual Development (Providing resources and guidance for our devotional life, prayer groups, retreats and other small group experiences)
5. Leadership Development (Training leaders for the church's programs)
6. Work with Youth

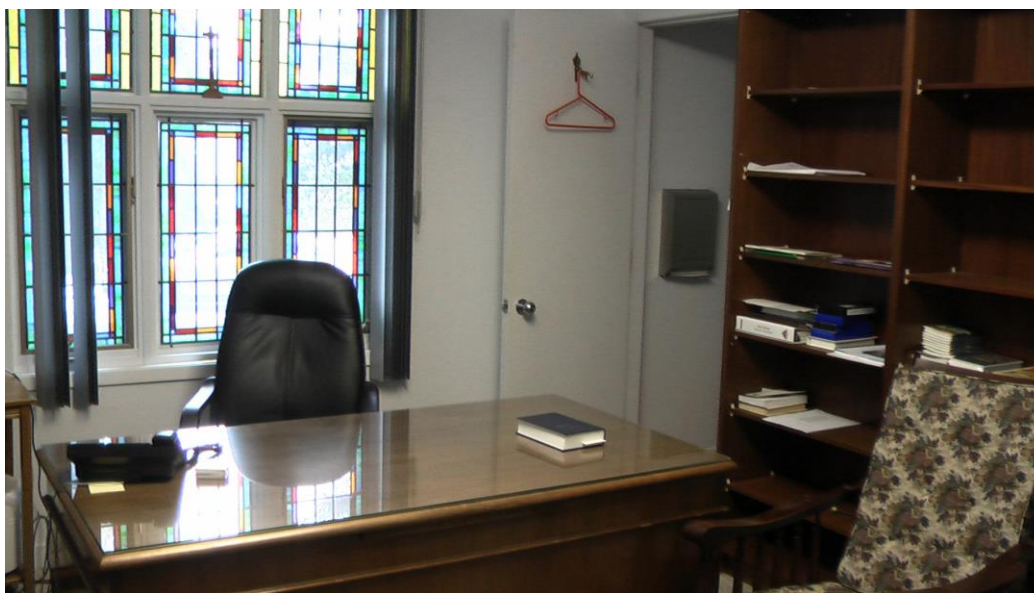
## Our History and Current Property

Scottish settlers employed to build the Rideau Canal formed the nucleus of many of the area's Presbyterian Churches. In 1846 a congregation was established in a log structure at the north end of Long Island; the cemetery can still be found beside River Road, near the locks.



By 1877 the congregation had grown to such a size that a brick church was erected at the corner of Bridge St. and Long Island Road. The present Presbyterian Church on Mill St. in [Dickinson Square](#), built in 1926, is pictured above, beside North America's oldest operating five-story grist mill.

An addition was added in 1986: The main floor contains a foyer, washroom, church office, choir room and minister's office with private washroom (pictured below). On the second floor there is a large nursery with a sink, plus a washroom and a balcony with extra seating.



The basement addition houses a large kitchen (above), an additional office, bathrooms and a children's area. The basement hall can seat up to 100 for a dinner and also houses a library, and the sanctuary seats 200. The facility is in generally good repair, with many recent upgrades, including city sewer and water.

## Geographic Area Description

Manotick is a village that was amalgamated into the City of Ottawa in 2000. However, historic buildings and a small town atmosphere on the Rideau River still prevail. With recent improvements to businesses and infrastructure, our Main Street is becoming a trendy dining & shopping destination. Most residents have post-secondary education and are among the highest average income earners in the area.

Manotick's Presbyterian, United, Anglican and Roman Catholic Churches cooperate in a local food bank.

There is a variety of housing options in Manotick and the surrounding villages, from older homes, to new developments. There is also a wide range of [education available in Ottawa](#), plus the University of Guelph-Kemptville Campus. Our location, just south of a greenbelt, allows for rapid access to any part of greater Ottawa; we are on the Ottawa bus routes; and a new bridge has recently been completed construction north of the village to reduce traffic.

The Ottawa area is renowned for its scenery, [tourist attractions](#) and outdoor activities through four distinct seasons.

## Regional Statistics

In addition to Manotick, Knox draws members from surrounding rural villages that were also absorbed by Ottawa in 2000 including: Manotick Station, Osgoode, Greely, North Gower, and Kars. Members also come from the nearby Ottawa suburbs of Barrhaven and Riverside South. Within a radius of 15 kilometres, this area contains approximately 30 churches, including Saint Andrew's Presbyterian church in Kars and a new church plant in Barrhaven.

At the time of amalgamation, these areas had a total population of 30,000. The 2011 census counted 51,380 people, with most of the increase in Barrhaven and Riverside South. Manotick itself has a population of 4520 people. Plans for further development abound, with 1200 new homes planned for Manotick alone.

In 2011, 23% of the population was 15 years old and under, 10% from 16-24, 29% from 25-44, 28% from 45-64 and 10% from 65+. 19% of these people lived alone, 33% lived with 2 or more adults, and 48% were couples with at least one child. Of the 17,615 households, 99% were private homes, with only 1% apartments.

## Knox Statistics

	2015	2010
<b>Active Members</b>	251	204
<b>Average Sunday attendance</b>	104	105
<b>Age</b>		
0-4	5%	4%
5-14	13%	13%
15-24	7%	7%
25-44	20%	19%
45-64	19%	25%
65+	36%	32%
	100%	100%
<b>Living Patterns</b>		
Couple with at least 1 child	31%	32%
Single Persons	36%	32%
Two or more adults	33%	36%
	100%	100%
<b>Housing Patterns</b>		
Total number of households	118	105
Apartments (%)	10%	2%
Private homes (%)	90%	98%
	100%	100%
<b>Occupations</b>		
Clerical/Secretarial	1%	4%
College/University students	5%	2%
Elementary/Secondary students	16%	19%
Farmers	0%	0%
Homemakers	2%	2%
Professional/Business	27%	23%
Retired	42%	39%
Technicians	2%	3%
Unemployed	0%	0%
Other	5%	7%
	100%	100%

## Knox Church School

Ages 3 - 11 (children)

Ages 12 - 18 (youth)

YEAR	ENROLMENT		ATTENDANCE (avg./Sunday)		CURRICULUM		TEACHERS	
	Children	Youth	Children	Youth	Children	Youth	Children	Youth
2011	23	5	12	3	Augsburg - Spark	Claim the Life	10	2
2012	26	5	13	3	Augsburg - Spark	Claim the Life	9	2
2013	22	6	12	3	Augsburg - Spark	Claim the Life	8	2
2014	16	10	7	5	Augsburg - Spark	Claim the Life	7	4
2015	15	16	6	6	Augsburg - Spark	Re:Form/BibleZone	6	4

## Our Mission, as seen in our Session Committee Structure

### **Children, Youth and Family Ministry:**

**Mandate** To provide a welcoming and nurturing environment for children, youth and families to encounter faith and grow in their journey to learn, believe and share God's Saving Love.

#### **Scriptural Basis *Matthew 28: 19-20***

*Therefore go and make disciples of all nations, baptizing them in the name of the Father and of the Son and of the Holy Spirit, and teaching them to obey everything I have commanded you. And surely I am with you always, to the very end of this age.*

**Scope** Children, Youth and Family Ministry is focused on the formal education and leadership training of children, youth, young adults and young families.

Following the Leading with Care practices and policies the ministry recruits, screens, trains, places, oversees and recognizes people that are gifted in the Christian Education area that will support and enhance the memberships' spiritual journey of faith.



### **Nurture Ministry:**

**Mandate** Coordinate activities concerned with the welfare, spiritual nurture and well-being of the Congregation.

#### **Scriptural Basis *Romans 12: 10-13***

*Be devoted to one another in brotherly love. Honour one another above yourselves. Never be lacking in zeal, but keep your spiritual fervour, serving the Lord. Be joyful in hope, patient in affliction, and faithful in prayer. Share with God's people who are in need. Practice hospitality.*

**Scope** Responsible for Library, Care Groups, Men's Ministry, Women's Ministry (quarterly meetings and annual retreat), Friendship, Pastoral Care (an active and trained group which visits shut-ins and the sick), Prayer Chain, Hospitality.

### **Worship and Witness Ministry:**

#### **Worship**

**Mandate** Arrange for worship which is built on Holy Scripture, is practiced in the name of Christ and in the body of Christ, is the work of the Holy Spirit, is a dialogue between God and God's gathered people, is participatory, is diaconal, and is both local and universal. Provide opportunities for the congregation to respond to the call to help people in need and to reach out to the local community, Canada and around the world with Christ's love.

#### **Scriptural Basis *John 4: 23 – 24***

*Yet a time is coming and has now come when the true worshippers will worship the Father in spirit and truth, for they are the kind of worshippers the Father seeks. God is spirit, and his worshippers must worship in spirit and in the truth.*

**Scope/Responsible** for Sunday services at 10 a.m. plus special services (Christmas Eve – Family and Traditional), Audio/Visual (trained committee with projector & wireless mics), Flowers, Greeters.

#### **Music**

Responsible for contemporary and traditional styles, with a worship team and a professional organist and choir director.

#### **Witness**

Responsible for Our Outreach statement, "called to share God's saving love", remains our focus as we seek to witness to the surrounding areas. In addition to our outreach, Knox is involved in such ongoing programs as, Manotick food bank, our website and other missions.



#### **Scriptural Basis *Acts 1:8***

*But you will receive power when the Holy Spirit comes on you; and you will be my witnesses in Jerusalem, and in all of Judea and Samaria, and to the ends of the earth*

### **Finance and Maintenance Ministry:**

**Mandate** The Finance and Maintenance Ministry (F&M Ministry) is responsible for overseeing all financial aspects of the church under the oversight of the Session. An annual budget is prepared and presented to the congregation for its approval at the annual meeting. The mandate also includes on-going maintenance of the church building, fundraising, preservation of archival materials, the Memorial Book updates as well as Stewardship encouragement. Finally, this

ministry is also responsible for ensuring that the positions of Office Administrator and Building Custodian are capably occupied.

**Scriptural Basis Psalm 24:1**

*The earth belongs to God! Everything in all the world is his.*

**Romans 12: 6-8**

*God has given each of us the ability to do certain things well. So if God has given you the ability to prophesy, then prophesy whenever you can – as often as your faith is strong enough to receive a message from God. If your gift is that of serving others, serve them well. If you are a teacher, do a good job at teaching. If you are a preacher see to it that your sermons are strong and helpful. If God has given you money, be generous in helping others with it. If God has given you administrative ability and put you in charge of the work of others, take the responsibility seriously. Those who offer comfort to the sorrowing should do so with Christian cheer.*

Responsible for use and maintenance of church facilities, Fundraising, including Dickinson Day, tortiere sales and other special events, Memorial Book, Archival Material, and all aspects of Finances.

**FINANCIAL STATEMENT for 2014**

**INCOME**

Offerings/Gifts	\$204,959
Investments	\$ 355
Miscellaneous	\$ 1,925
Other	\$ 8309
Total Income	\$215,548

**EXPENSES**

Operating Expenses	\$149,988
Debt Payment	\$ 7,900
Benevolences	\$ 32,482
(Presbyterians Sharing, Synod, Presbytery, WMS, PWS&D)	
Other	\$ 0
Total Expenses	\$190,370

**APPROVED BUDGET for 2015**

\$138,523

**PRESBYTERIANS SHARING for 2015**

\$20,000

**COMMENTARY:**

General operating revenues have declined since their peak in 2007. Notwithstanding, the congregation has been very generous when there is an identified need.

To that end, they have funded a number of upgrades to our facilities over the past ten years; notably, an audio/visual system upgrade (\$23.5K), a heating system replacement (\$13.5K), a new roof (\$22K), a fire system upgrade (\$15K), and a new commercial dishwasher (\$6K).





In 2008, the church secured a \$60,000 mortgage from the Presbyterian Lending Fund to pay for required building improvements, primarily: hookup to the city sewer system, air conditioning replacement and lower hall upgrades. Virtually all planned building improvements are now completed without consuming all of the mortgage monies and the mortgage was paid off in 2014.

### **Additional Information**

1. Vibrant Village Manotick BIA. *The Vibrant Village of Manotick*. Available at: <http://manotickvillage.com/>
2. The Manotick Directory. *Church and Religion Directory*. Available at: <http://www.manotick.net/churches.html>
3. The Manotick Directory. *Manotick Information*. Available at: <http://www.manotick.net/information.html>
4. The Manotick Directory. *Government*. Available at: <http://www.manotick.net/gov.html>
5. Wikipedia. *Manotick*. Available at: <http://en.wikipedia.org/wiki/Manotick>
6. The Rideau Township Historical Society (RTHS). *Happening Now: What's Next*. Available at: <http://www.rideautownshiphistory.org/index.html>
7. The Presbyterian Church in Canada. *The Presbytery of Ottawa*. Available at: <http://www.presbyterian.ca/geosynod/presbyott/index.html>
8. Ottawa Neighbourhood Study. *Neighbourhood Profiles – Manotick*. Available at: <http://neighbourhoodstudy.ca/manotick-north-gower/>

## Compensation

- The annual stipend (which includes car allowance) will be negotiated on the basis of experience, education, and other relevant factors in accordance with Presbytery and the guidelines of The Presbyterian Church of Canada (PCC)
- Presbyterian Church of Canada Medical/Dental plan and Pension Plan
- Continuing Education allowance (\$600 per year) and study time (two weeks), cumulative for five years
- Annual vacation of five weeks (prorated in first and last year)
- A housing allowance is added, as the congregation no longer maintains a manse

It will help the work of the Search Committee if candidates will indicate their expectations regarding stipend and benefits.